



Large Cabinet Racks  
**Series 2000**



**Design Features**

- \*Anodized aluminum extrusion top trim.
- \*All welded 14 gauge steel frame with "U" shaped 16 gauge steel panel mounting rail supports.
- \*Door, 20 gauge steel.
- Sides and top, 18 gauge steel.
- \*Adjustable front and rear panel mounting rails tapped #10-32 on E.I.A. universal spacing. (use #7346 screws - order separately)
- \*Accommodates 19" wide E.I.A. panels.
- \*Bottom pierced for RC-7758 casters.
- \*1.109 inch diameter knockout holes in base.
- \*1200# equipment load capacity.

**Bonus Features**

- \*Interiors are accessible from front and rear for easy installation and maintenance of components.
- \*Readily removable rear door.
- \*Shipped completely assembled.

**Finishes**

Grey Texture (GT), Royal Blue Texture (RB). Available in other Bud textured finishes at no extra cost.

SERIES 2000 Cabinet Racks (19" Panel Width)											
Non-Ventilated			Ventilated			Panel Space (PS)	Outside Height (A)	Outside Width (B)	Outside Depth (C)	Clear Inside Depth (D)	Weight (Lbs.)
Catalog No.	Accessories	Drawings	Catalog No.	Accessories	Drawings						
E-2000			N/A	N/A	N/A	21.00"	30.25"	24.19"	23.87"	20.50"	119

E-2003			N/A	N/A	N/A	42.00"	51.25"	24.19"	23.87"	20.50"	168
E-2004			N/A	N/A	N/A	52.50"	61.75"	24.19"	23.87"	20.50"	195
E-2005			N/A	N/A	N/A	61.25"	70.50"	24.19"	23.87"	20.50"	216
E-2006			N/A	N/A	N/A	70.00"	79.25"	24.19"	23.87"	20.50"	233
E-2007			N/A	N/A	N/A	78.75"	88.00"	24.19"	23.87"	20.50"	260
E-2008			E-2024			21.00"	30.25"	24.19"	27.37"	24.00"	129
E-2011			E-2027			42.00"	51.25"	24.19"	27.37"	24.00"	179
E-2012			E-2028			52.50"	61.75"	24.19"	27.37"	24.00"	215
E-2013			E-2029			61.25"	70.50"	24.19"	27.37"	24.00"	234
E-2014			E-2030			70.00"	79.25"	24.19"	27.37"	24.00"	244
E-2015			E-2031			78.75"	88.00"	24.19"	27.37"	24.00"	268
E30-2000			N/A	N/A	N/A	21.00"	30.25"	24.19"	32.62"	29.25"	150
E30-2003			N/A	N/A	N/A	42.00"	51.25"	24.19"	32.62"	29.25"	217
E30-2004			N/A	N/A	N/A	52.50"	61.75"	24.19"	32.62"	29.25"	248
E30-2005			N/A	N/A	N/A	61.25"	70.50"	24.19"	32.62"	29.25"	259
E30-2006			N/A	N/A	N/A	70.00"	79.25"	24.19"	32.62"	29.25"	303
E30-2007			N/A	N/A	N/A	78.75"	88.00"	24.19"	32.62"	29.25"	307

PART NAME SERIES 2000 UPRIGHT CABINET RACK

PART No.

E-2000 TO E-2015

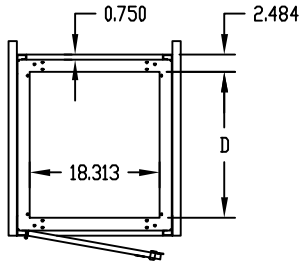
REV. DATE 1-2-02

**FINISH:**

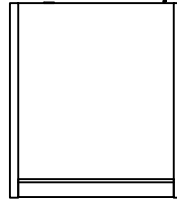
FRAME ASSEMBLY, SIDES,  
DOOR & TOP COVER \_\_\_\_\_ GRAY TEXTURE OR  
ROYAL BLUE TEXTURE  
PANEL MOUNTING RAILS \_\_\_\_\_ SMOOTH BLACK  
FRONT TOP TRIM \_\_\_\_\_ METALLIC GRAY

**MATERIAL:**

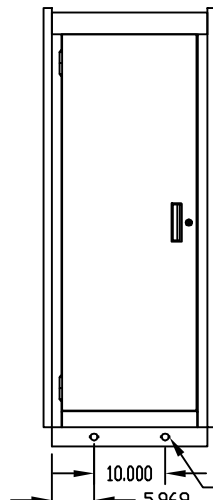
PANEL MOUNTING RAILS \_\_\_\_\_ 12 GA. STEEL  
FRAME TOP, BASE ASSEMBLY,  
FILLERS & VERTICAL RAILS \_\_\_\_\_ 14 GA. STEEL  
RAIL SUPPORTS \_\_\_\_\_ 16 GA. STEEL  
TOP COVER & SIDES \_\_\_\_\_ 18 GA. STEEL  
DOOR & FRONT TOP TRIM \_\_\_\_\_ 20 GA. STEEL



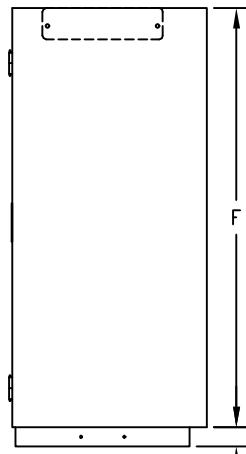
TOP VIEW  
(LESS TOP COVER  
& FRONT TOP TRIM)



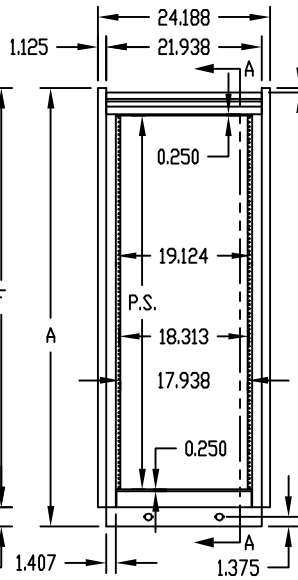
TOP VIEW



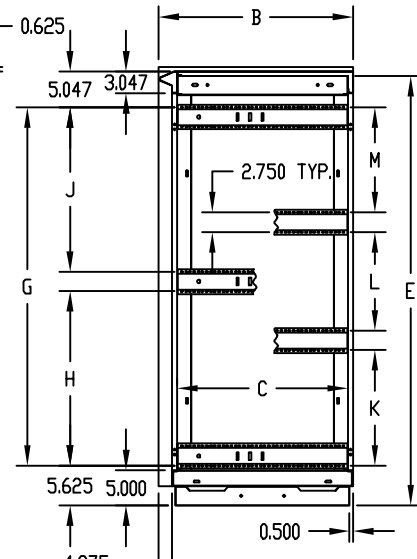
REAR VIEW



LEFT SIDE VIEW



FRONT VIEW

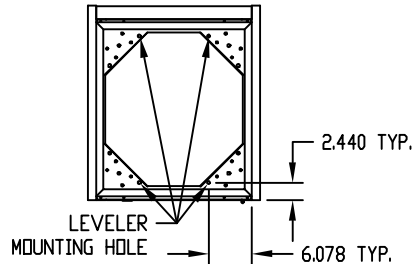


SECTION 'A-A'  
(LESS PANEL MTG. RAILS)

PANEL MOUNTING RAILS (FRONT & REAR)  
ARE TAPPED #10-32 DN E.I.A. UNIVERSAL  
SPACING AND ARE FULLY ADJUSTABLE.

BOTTOM PIERCED FOR MOUNTING RC-7758 CASTERS.

LOAD RATING: 1200 LBS. MAX.



BOTTOM VIEW

\* DISCONTINUED

PART No.	P.S.	A	B	C	D	E	F	G	H	J	K	L	M
E-2000	21.000	30.250	23.875	20.500	17.000	29.000	27.500	18.937	—	—	—	—	—
* E-2001	31.500	40.750	—	—	—	39.500	38.000	29.437	—	—	—	—	—
* E-2002	35.000	44.250	—	—	—	43.000	41.500	32.937	—	—	—	—	—
E-2003	42.000	51.250	—	—	—	50.000	48.500	—	19.281	17.906	—	—	—
E-2004	52.500	61.750	—	—	—	60.500	59.000	—	24.531	23.156	—	—	—
E-2005	61.250	70.500	—	—	—	69.250	67.750	—	28.906	27.531	—	—	—
E-2006	70.000	79.250	—	—	—	78.000	76.500	—	33.281	31.906	—	—	—
E-2007	78.750	88.000	23.875	20.500	17.000	86.750	85.250	—	—	—	25.125	22.312	23.750
E-2008	21.000	30.250	27.375	24.000	20.500	29.000	27.500	18.937	—	—	—	—	—
* E-2009	31.500	40.750	—	—	—	39.500	38.000	29.437	—	—	—	—	—
* E-2010	35.000	44.250	—	—	—	43.000	41.500	32.937	—	—	—	—	—
E-2011	42.000	51.250	—	—	—	50.000	48.500	—	19.281	17.906	—	—	—
E-2012	52.500	61.750	—	—	—	60.500	59.000	—	24.531	23.156	—	—	—
E-2013	61.250	70.500	—	—	—	69.250	67.750	—	28.906	27.531	—	—	—
E-2014	70.000	79.250	—	—	—	78.000	76.500	—	33.281	31.906	—	—	—
E-2015	78.750	88.000	27.375	24.000	20.500	86.750	85.250	—	—	—	25.125	22.312	23.750